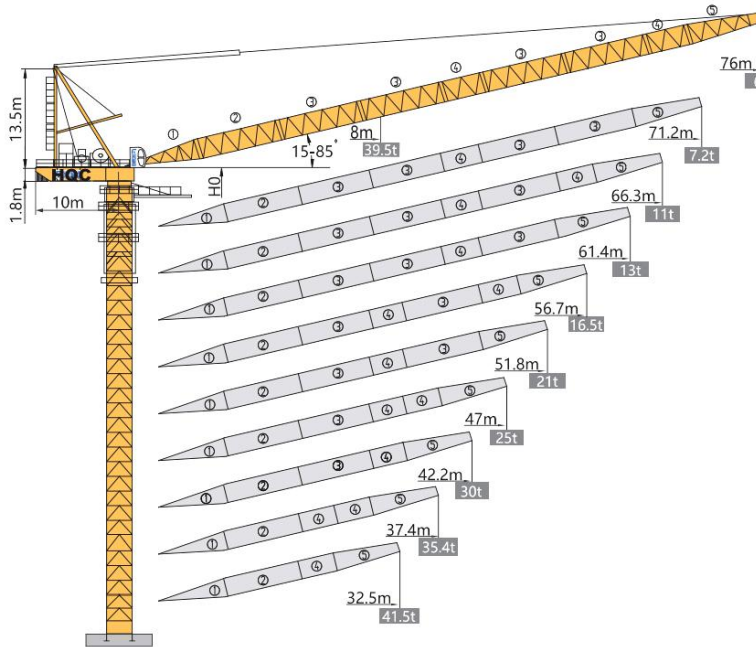


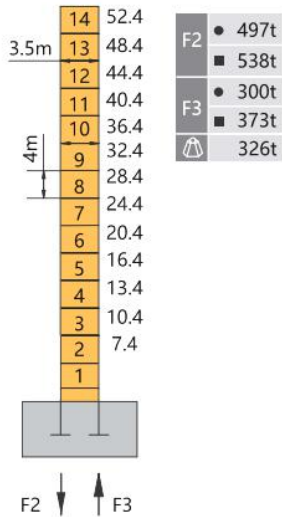
# SUPER HEAVY TYPE LUFFING TOWER CRANE XGTL1600II

## 外形尺寸 Dimensions

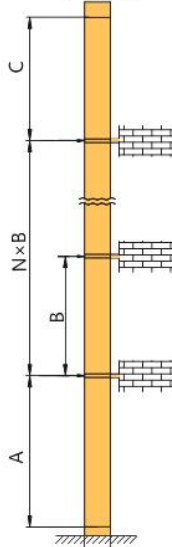


## 技术状态 Status

H(m) ↓ ↑



H(m) ↓ ↑



起重臂长 Jib length	A (m)	B (m)	C (m)	H0max (m)
L1-10	42	28	42	201.2

N 附着道数 Number of tie collars

$$H = A + N \times B + C + 4$$

塔身节数量 Number of masts =  $(H - 5.2) / 4$

H(m) 臂根铰点高度 Height of hinged point at jib root

● 工作状态反力 Reactions in service    ■ 非工作状态反力 Reactions out of service

⚠ 独立高度最大臂长的自重 (不含平衡重, 不含压重)

Weight with max free standing, max jib (without counter-jib ballast and load)

## 起重特性 Load Diagrams

起重臂 jib		R <sub>min</sub>	R(C <sub>max</sub> )	C <sub>max</sub>	幅度 (m) / 起重重量 (kg) Range(m) / Loading (kg)													
R (m)	α	m	m	kg	10	15	20	25	30	35	40	45	50	55	60	65	70	75
78		8.0	8.0	39500	37400	35100	33300	30800	28000	25400	22900	20500	17800	15100	12500	10100	7400	6300
		8.0	8.0	39500	37400	35100	33300	30800	28000	25400	22900	20500	17800	15100	12500	10100	7400	6300
73		7.5	7.5	43600	41600	39000	36700	34100	31100	28300	25500	22900	19800	16500	13700	11200	8200	
		7.5	7.5	43600	41600	39000	36700	34100	31100	28300	25500	22900	19800	16500	13700	11200	8200	
68		7.0	7.0	50000	48800	45500	42300	39000	35200	31600	27800	24600	20600	17300	14300	11600		
		7.0	7.0	50000	48800	45500	42300	39000	35200	31600	27800	24600	20600	17300	14300	11600		
63		6.6	6.6	50000	50000	50000	48300	43900	39000	34800	30200	25200	21200	17800	14400			
		6.6	6.6	61500	50000	50000	48300	43900	39000	34800	30200	25200	21200	19500	17800			
58		6.2	6.2	50000	50000	50000	50000	49300	43700	37500	31000	26000	22000	18300				
		6.2	6.2	70600	65300	60300	54700	49300	43700	37500	31000	26000	22000	18300				
53		5.7	5.7	50000	50000	50000	50000	50000	45600	38200	31700	26700	22500					
		5.7	5.7	83000	76100	68900	61100	53500	45600	38200	31700	26700	22500					
48		5.3	5.3	50000	50000	50000	50000	50000	47400	38500	32000	27200						
		5.3	5.3	93600	85700	75900	66800	58100	47400	38500	32000	27200						
43		4.8	4.8	50000	50000	50000	50000	50000	48000	38900	32400							
		4.8	4.8	100000	94000	84700	77900	60000	48000	38900	32400							
38		4.4	4.4	50000	50000	50000	50000	50000	48800	39300								
		4.4	4.4	100000	100000	93700	78900	61000	48800	39300								
33		4.0	4.0	50000	50000	50000	50000	50000	49000									
		4.0	4.0	100000	100000	100000	80000	61300	49000									

## 传动机构 Mechanisms

传动机构 Mechanisms	图例 Legend	型号 Model	速度(m/min) Speed	起重重量(t) Hoist Weight	容绳量(m) Rope Capacity	功率 (kW) Power
起升 Hoisting		220LVF250	0-60 0-40 0-20 0-30 0-20 0-10	12 25 50 24 50 100	790 >790*	220
变幅 Trolleying		160DVF150	≤3.5 min (15°~85°)			160
回转 Slewing		180HP403	0-0.7r/min			2×18.5
行走 Travelling		RT	0-16m/min			8×11
电源 Main Supply				440V;60HZ;3P / 380V; 50HZ;3P		
总功率 (不含顶升和行走) Gross Power (Excluding climbing and travelling)				417kW		

## 配重配置 Ballast

配重配置 Counter-jib Ballast		7000	
(m)	(m)	(kg)	PZ7000
60	10.0	70000	10
55	10.0	70000	10
50	10.0	70000	10
45	10.0	70000	10
40	10.0	70000	10
35	10.0	70000	10
30	10.0	70000	10