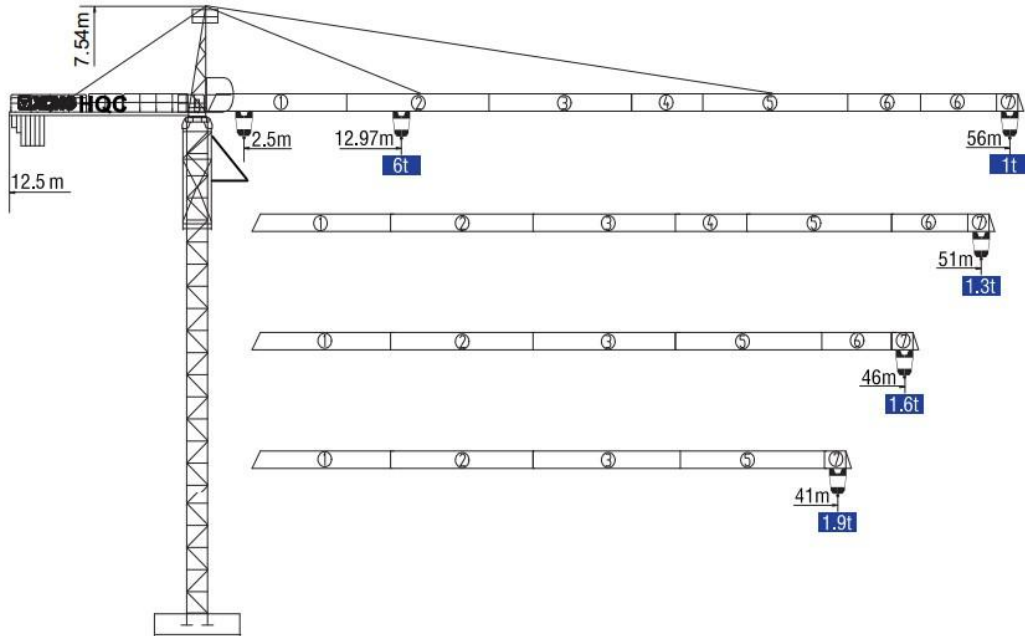


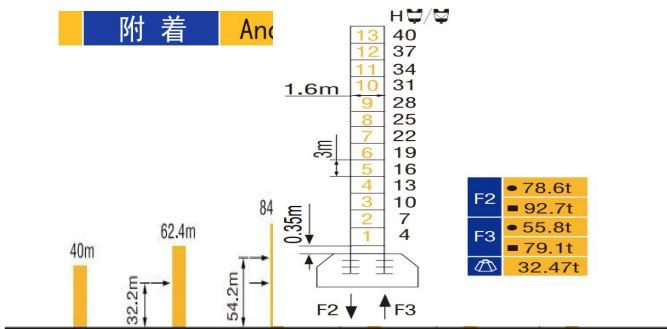
HAMMER HEAD TYPE TOPKIT TOWER CRANE TC5610



外形尺寸 Dimensions



附着 Anchorage



技术状态 Status

- F2 ● 78.6t
- 92.7t
- F3 ● 55.8t
- 79.1t
- ▲ 32.47t

起重特性 Load Diagrams

起重臂 (m) jib (m)	R _{min}	R (C _{max})	C _{max}	幅度 (m) Range									
				16	21	26	31	36	41	46	51	56	
56m		2.5	24.18	3t	3000		2754	2226	1845	1556	1330	1149	1000
		2.5	12.97	6t	4755	3488	2708	2180	1799	1510	1285	1103	954
51m		2.5	26.37	3t	3000			2474	2058	1744	1497	1300	
		2.5	14.14	6t	5263	3855	3004	2429	2013	1698	1452	1254	
46m		2.5	27.7	3t	3000			2626	2189	1858	1600		
		2.5	14.85	6t	5530	4078	3185	2580	2143	1813	1554		
41m		2.5	28.18	3t	3000			2680	2236	1900			
		2.5	15.11	6t	5636	4159	3250	2635	2190	1854			

传动机构 Mechanisms

机构 Mechanisms	图例 Example	机构代号 Model	速度(m/min) Speed	起重量(t) Hoist Weight	容绳量(m) Rope Capacity	功率 Power	
起升 Hoisting		24QT15		8.5	3	360 >360*	24/24/5.4kW
				40	3		
				80	1.5		
				4.2	6		
				20	6		
				40	3		
变幅 Trolleying		33BDZ60	50/25m/min			3.3/2.2kW	
回转 Slewing		37HR100	0~0.6r/min			2×3.7kW	
行走 Travelling		RT324	12/24m/min			2×2.6/5.2kW	
电源 Main supply					~380V (±10%) 50Hz		
总功率 (不含顶升和行走) Gross power (excluding top-lifting and travelling)					34.7kW		

配重配置 Ballast

Counter-jib ballast		Counter weight type		
			PZ2330	PZ1250
56m	12.5m	15230 (kg)	6	1
51m	12.5m	13980	6	0
46m	12.5m	12900	5	1
41m	12.5m	11650	5	0