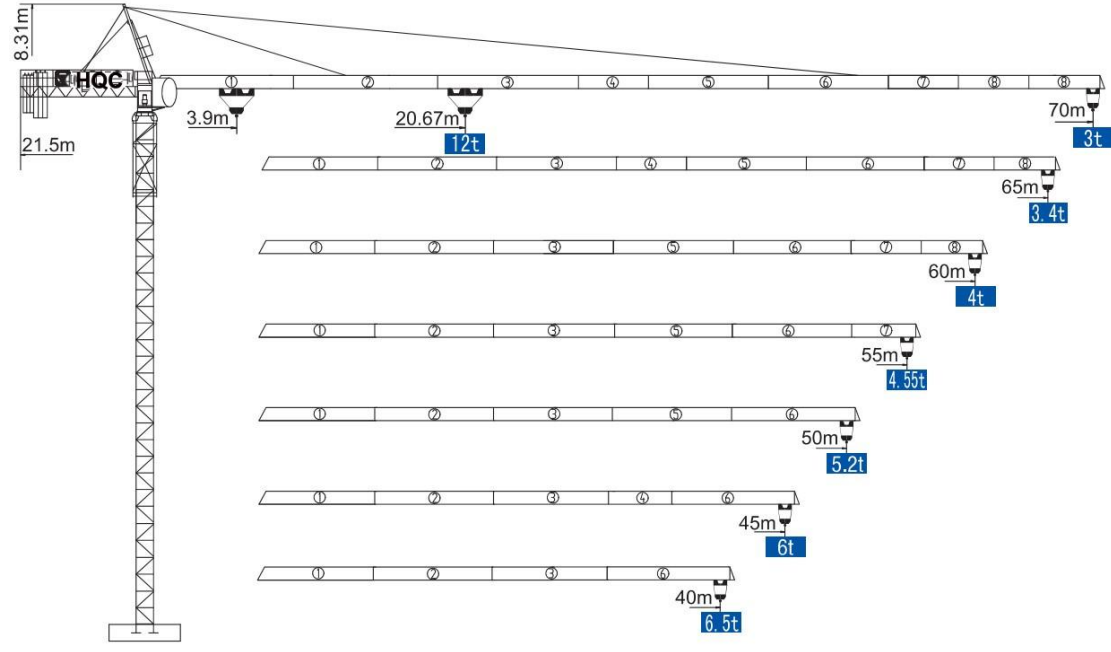


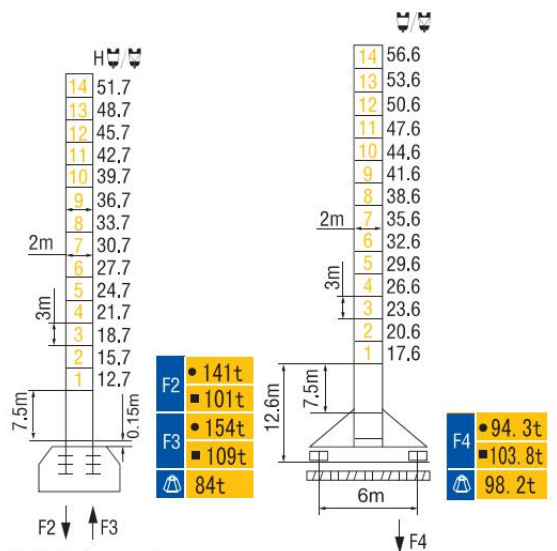
# HAMMER HEAD TYPE TOPKIT TOWER CRANE TC7030



## 外形尺寸 Dimensions

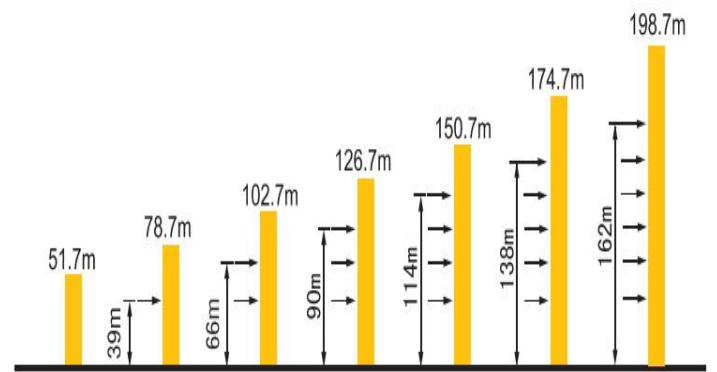


## 技术状态 Status



● 工作状态 In service    ■ 非工作状态 Out of service  
▲ Without load and ballast with longest jib and maximum height

## 附着 Anchorages



\* 如需达到更高的高度, 请与我们联系! For greater heights, consult us!

## 起重特性 Load Diagrams

起重臂 (m) Jib	R <sub>min</sub>	R (C <sub>max</sub> )	C <sub>max</sub>	幅度 (m) Range												
				15	20	25	30	35	40	45	50	55	60	65	70	
70m		4.8	39.67	6t	6000					5942	5172	4559	4061	3647	3298	3000
		3.9	20.67	12t	12000	9554	7645	6300	5302	4532	3919	3421	3007	2658	2360	
65m		4.8	40.62	6t	6000					5320	4693	4182	3758	3400		
		3.9	21.15	12t	12000	9827	7870	6492	5469	4680	4053	3542	3118	2760		
60m		4.8	42.72	6t	6000					5646	4985	4447	4000			
		3.9	22.21	12t	12000	10426	8365	6914	5837	5006	4345	3807	3360			
55m		4.8	43.54	6t	6000					5773	5099	4550				
		3.9	22.63	12t	12000	10660	8558	7079	5980	5133	4459	3910				
50m		4.8	44.26	6t	6000					5886	5200					
		3.9	23	12t	12000	10868	8730	7225	6108	5246	4560					
45m		4.8	45	6t	6000											
		3.9	23.5	12t	12000	11152	8965	7425	6282	5400						
40m		4.8	40	6t	6000											
		3.9	24.13	12t	12000	11507	9259	7675	6500							

## 传动机构 Mechanisms

机构 Mechanisms	图例 Example	机构代号 Model	速度 (m/min) Speed	起重量 (t) Hoist Weight	容绳量 (m) Rope Capacity	功率 Power		
起升 Hoisting		55LVF30		45	6	632	55kW	
				90	3			
				22.5	12			>632*
				45	6			
变幅 Trolleying		6DVF	0~63m/min			5.5kW		
		120JXL				120N, m		
回转 Slewing		15RVF	0~0.7r/min			2×7.5kW		
		RCV290				2×120N, m		
行走 Travelling		RT443	12.5/25m/min			4×1.7/3.4kW		
电源 Main supply					~380V (±10%) 50Hz			
总功率 (不含顶升和行走) Gross power (excluding top-lifting and travelling)					75.5/65.5/71.5kW			

## 配重配置 Ballast

Counter-jib ballast		4375 (kg) / 3475 (kg) / 3175 (kg)			
			PZ4375	PZ3475	PZ3175
70m	21.5m	22650	2	4	0
65m	21.5m	20850	0	6	0
60m	21.5m	18575	2	1	2
55m	21.5m	17075	0	4	1
50m	21.5m	15700	2	2	0
45m	21.5m	13600	0	3	1
40m	21.5m	11325	1	2	0