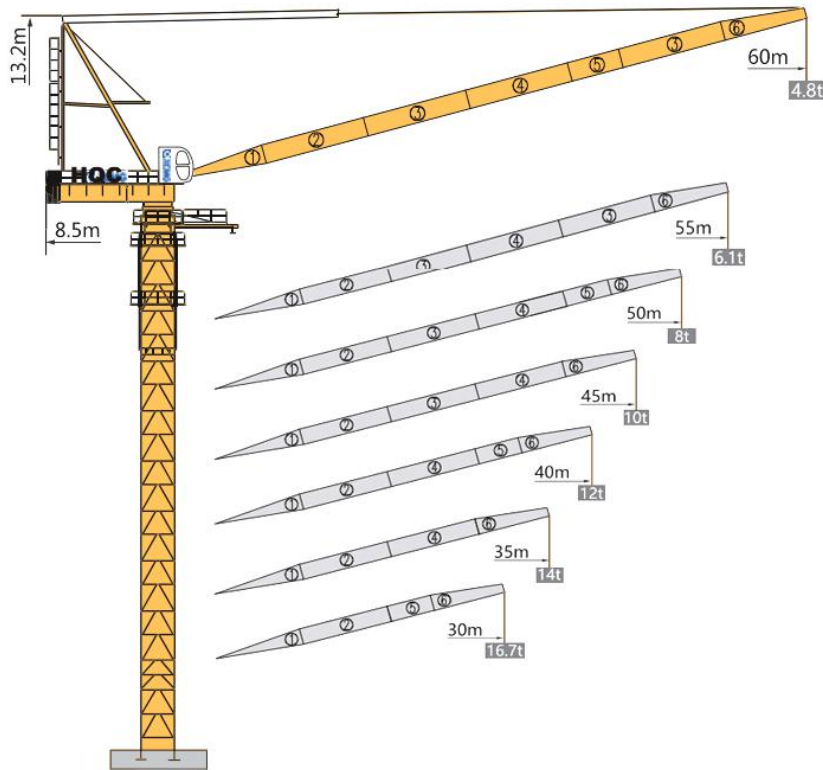
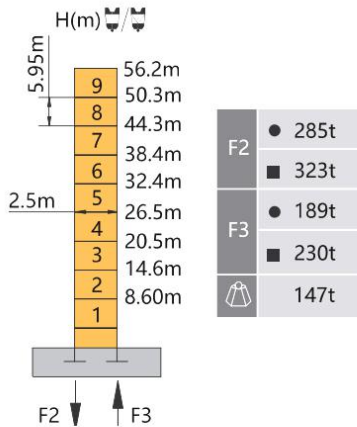


SUPER HEAVY TYPE LUFFING TOWER CRANE XGTL500 / 6048-25

外形尺寸 Dimensions



技术状态 Status



H(m) 臂根铰点高度 Height of hinged point at jib root

● 工作状态反力 Reactions in service

■ 非工作状态反力 Reactions out of service

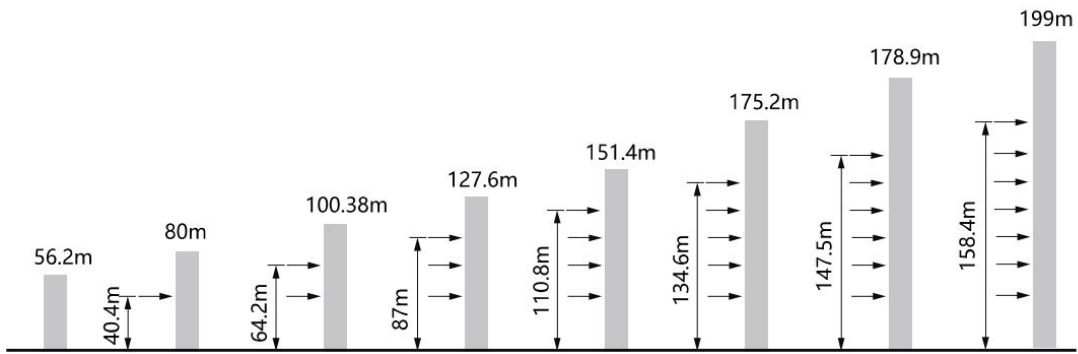
⊙ 独立高度最大臂长的自重 (不含平衡重, 不含压重)

Weight with max free standing, max jib (without counter-jib ballast and load)

配重配置 Ballast

配重配置 Counter-jib Ballast		4446(kg)	
⊙ (m)	⊙ (m)	⊙ (kg)	PZ4446
60	8.5	40014	9
50	8.5	40014	9
45	8.5	40014	9
40	8.5	40014	9
35	8.5	40014	9
30	8.5	40014	9

附着 Anchorages



起重特性 Load Diagrams

起重臂 jib R (m)	α	R _{min} m	R(C _{max}) m	C _{max} kg	幅度 (m) / 起重量 (kg)								
					5 ~ 20	25	30	35	40	45	50	55	60
60		6.4	35.4	12500	12500				10308	8436	6956	5764	4800
		6.4	21.3	25000	25000	20231	15614	12354	9938	8085	6629	5468	4551
55		6.0	35.8	12500	12500				10560	8716	7261	6100	
		6.0	21.4	25000	25000	20371	15814	12598	10217	8395	6969	5854	
50		5.5	37.5	12500	12500				11383	9486	8000		
		5.5	22.1	25000	25000	21526	16830	13518	11069	9200	7757		
45		5.1	38.6	12500	12500				11891	10000			
		5.1	22.6	25000	25000	22086	17377	14058	11611	9761			
40		4.6	38.8	12500	12500				12000				
		4.6	22.5	25000	25000	22011	17391	14143	11765				
35		4.2	35.0	12500	12500								
		4.2	22.1	25000	25000	21535	17100	14000					
30		3.7	30.0	12500	12500								
		3.7	21.6	25000	25000	20942	16700						

传动机构 Mechanisms

传动机构 Mechanisms	图例 Legend	型号 Model	速度 (m/min) Speed	起重量 (t) Hoist Weight	容绳量 (m) Rope Capacity	功率 (kW) Power	
起升 Hoisting		88LVF125DB		0-32	12.5	900 > 900*	88
				0-64	6.2		
				0-96	2.5		
				0-19	25		
				0-32	12.5		
				0-48	5		
变幅 Trolleying		90DVF85B		≤ 3 min (15°~85°)		90	
回转 Slewing		11RVF		0~0.6 r/min		2×11	
行走 Travelling		RT		0~15 m/min		6×5.2	
电源 Main Supply				440V;60HZ;3P / 380V;50HZ;3P			
总功率 (不含顶升和行走) Gross Power (Excluding climbing and travelling)						200kW	